


# Parent Information Meeting

April, 2023



# Welcome and Introductions

---

## School Leaders

Lead Pastor- Troy Drake

School Superintendent/Principal- Greg Cordero

## Support Leaders

Executive Pastor- Nathan Cooney

Administrative Pastor- Brian Procedo

---

# Greg Cordero

- **About Me**

- Raised in S. Florida in a Christian home
- PK, attended Christian school Middle/HS
- Air Force as Security Police (8 years)
- Married in 2000, have 4 boys (21, 19, 16, 15)
- Moved to Idaho in 2005

- **Education**

- **1993** - Southeastern Bible College (BA Elementary Ed K-8th)
- **2000** - University of Phoenix (Masters degree in Teaching Technology)
- **2010** - University of Idaho (Career Technical Education Certified)
- **2011 & 2017** - Boise State University (Technology Coordinator and Ed. Specialist degree in Executive Leadership)
- Idaho certified with superintendent endorsement

- **Experience**

- **1994-1996** Christian School supervisor and principal
- **1996-2004** Private school - Technology teacher
- **2008- Present** Compass Public Charter-computer teacher, IT Director, VP, Principal

- **Goals and Vision for Calvary Prep Academy**

- To build a God directed safe and trusting community to include students, staff, and parents
- To walk alongside staff and students in prayer and Godly counsel
- To provide a high quality Christian educational learning environment

- **Leadership Style**

- Use Biblical principles
- Partnership with staff, students and parents
- To build relationships

# Spiritual Leadership Oversight

---

## **Calvary Chapel Meridian Pastors...**

- Will provide spiritual guidance
  - Will be available daily to staff and students Tuesdays thru Fridays
  - Will assist the school leadership team as needed
  - Will assist with weekly chapel and spiritual counseling
  - Will assist in teaching various Bible classes
-

# School Governance

---



# Our School

## Calvary Prep Academy

**University style  
Model**



3600 W Nelis Dr.  
Meridian, ID 83646

**Accredited through:**



**School Colors- orange, yellow, black, grey**

# Mission/Vision/Focus

## **Mission**

Calvary Prep Academy empowers parents in the education and discipleship of their children by partnering with certified Christian teachers to combine the best attributes of central and satellite classroom learning. By fostering the development of Christian character both at home and at school, we are preparing our students to courageously influence the world for Jesus Christ.

## **Vision**

Calvary Prep Academy will fuel a growing movement of Christian families in the Treasure Valley by integrating responsibilities of academic and spiritual education. By nurturing parent/teacher partnerships, we desire to see our students grow into well-educated disciples for Jesus Christ.

## **Focus**

Make disciples for the work of the ministry.

# What is the University Model

---

- It combines the positive aspects of homeschooling with the positive aspects of traditional schooling,
  - Faith-driven to integrate parents into the education process as true partners.
  - UMSI uses a university-style schedule adapted to the elementary and secondary levels.
  - Professional teachers instructing in their areas of expertise, conduct classroom central teaching.
  - Students attend these classes Tuesday, Wednesday, and Friday.
  - Thursday Electives for High school and 4th-8th is optional
  - Monday and Thursday students do satellite learning at home, where parents continue the instruction and supervision based on teacher-provided lesson plans.
  - This hybrid model brings together the best attributes of the classroom with the benefits of one-on-one parent engagement and guidance at home.
  - Through this partnership, parents and teachers seek to raise up well-educated disciples of Christ for the next generation.
-



# Parent Reminder

---

What your children

**SEE YOU DO**

teaches far more than what  
your children hear you say.

---

# 3 Legged Stool Philosophy

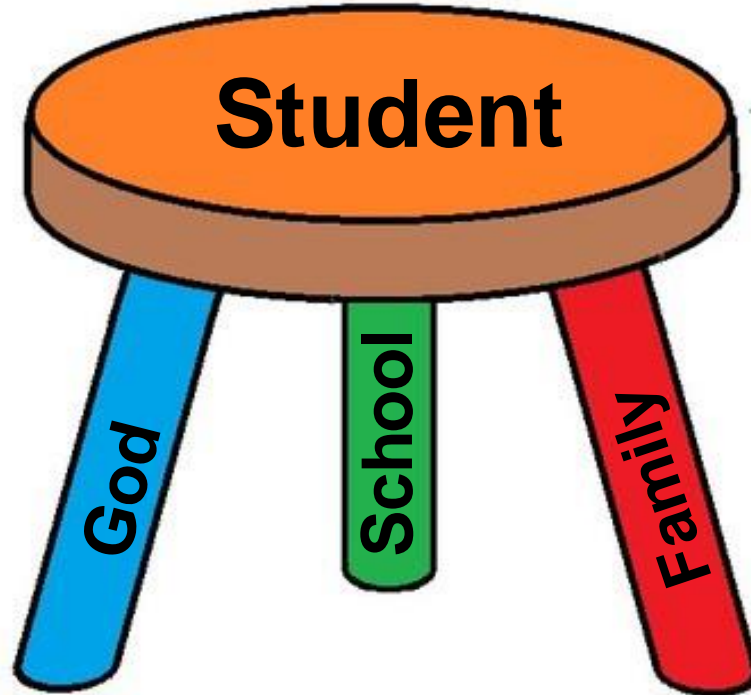
## God

He is our strength, our guide, our source of truth, wisdom, vision and direction.

## School

Calvary Prep Academy is a Christian school following the University Model. The school's part is to:

- Partner with parents
- Integrate a biblically-based academic environment through Christian faith and sound doctrine.
- Support both the central classroom (teacher-directed) and the satellite classroom (parent-directed).



## Family

### Parents

- Mentoring their child to know Christ and to live according to His purposes
- Responsible for oversight and course work in the satellite classroom

### Student

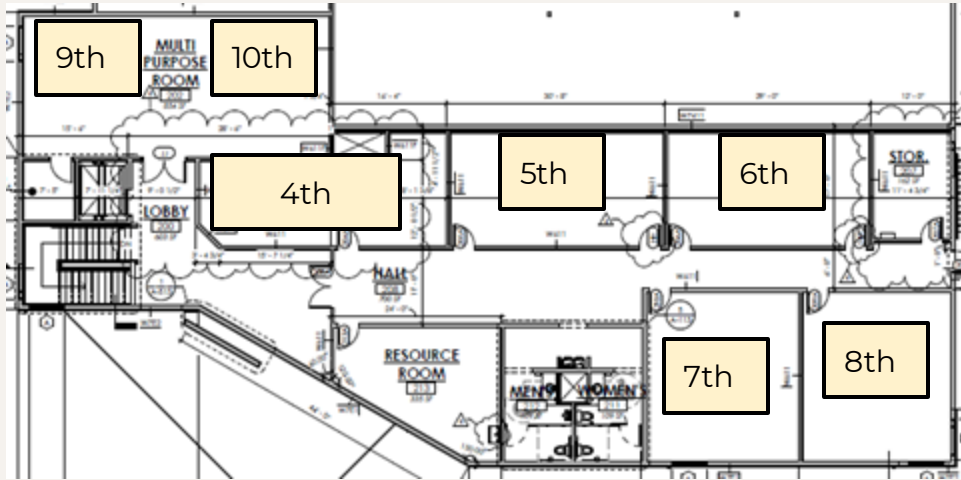
- Grows confidently in the abilities given to them through excelling at their God-given talents and gifts, discovering God's truth as they walk the road of a committed follower of Jesus Christ.
- Perform to the best of their ability during both the central and satellite classroom.

# Key Statements of Faith

---

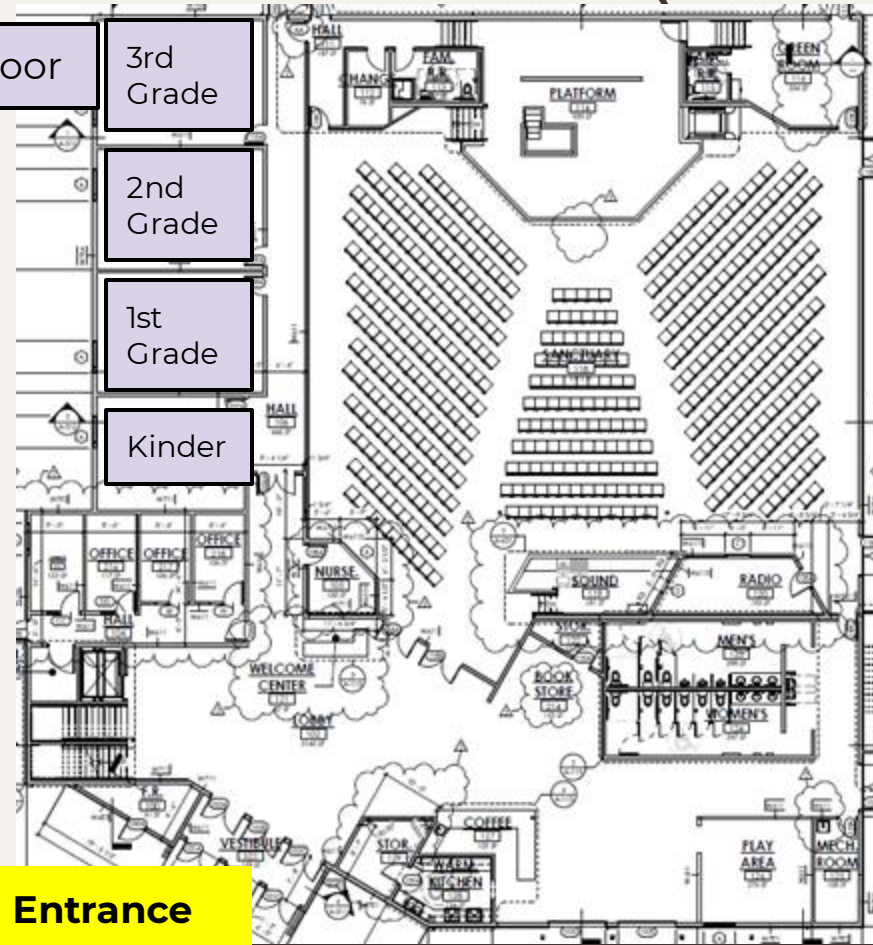
- **Bible-** We believe the Old & New Testaments of the Bible to be God's inspired message to mankind and that in it God reveals the plan of salvation and provides us with His blueprint for our lives.
  - **God-** We believe there is only one living and true God who is perfect in all His attributes, one in essence but eternally existing in three persons – Father, Son, and Holy Spirit, each equally deserving the same worship and obedience.
  - **Jesus-** We believe Jesus Christ is the one and only Son of God being fully man and fully God, and that he chose to humble himself and become a man for the purpose of dying on a cross for our sins.
  - **Holy Spirit-** We believe the Holy Spirit is sent to live inside, guide, teach, empower the believer, as well as, to convince the world of sin, of righteousness, and of judgment.
-

# The Facility



Second Floor

First Floor



Entrance

# Calvary Prep Academy

## 2023 - 2024 School Calendar

### August '23

Su	M	Tu	W	Th	F	S
		1	2	3	4	5
6	7	8	9	10	11	12
13	14	15	16	17	18	19
20	21	22	23	24	25	26
27	28	29	30	31		

### September '23

Su	M	Tu	W	Th	F	S
					1	2
3	4	5	6	7	8	9
10	11	12	13	14	15	16
17	18	19	20	21	22	23
24	25	26	27	28	29	30

### October '23

Su	M	Tu	W	Th	F	S
1	2	3	4	5	6	7
8	9	10	11	12	13	14
15	16	17	18	19	20	21
22	23	24	25	26	27	28
29	30	31				

### November '23

Su	M	Tu	W	Th	F	S
			1	2	3	4
5	6	7	8	9	10	11
12	13	14	15	16	17	18
19	20	21	22	23	24	25
26	27	28	29	30		

### December '23

Su	M	Tu	W	Th	F	S
					1	2
3	4	5	6	7	8	9
10	11	12	13	14	15	16
17	18	19	20	21	22	23
24	25	26	27	28	29	30
31						

### January '24

Su	M	Tu	W	Th	F	S
	1	2	3	4	5	6
7	8	9	10	11	12	13
14	15	16	17	18	19	20
21	22	23	24	25	26	27
28	29	30	31			

### February '24

Su	M	Tu	W	Th	F	S
				1	2	3
4	5	6	7	8	9	10
11	12	13	14	15	16	17
18	19	20	21	22	23	24
25	26	27	28	29		

### March '24

Su	M	Tu	W	Th	F	S
					1	2
3	4	5	6	7	8	9
10	11	12	13	14	15	16
17	18	19	20	21	22	23
24	25	26	27	28	29	30
31						

### April '24

Su	M	Tu	W	Th	F	S
	1	2	3	4	5	6
7	8	9	10	11	12	13
14	15	16	17	18	19	20
21	22	23	24	25	26	27
28	29	30				

### May '24

Su	M	Tu	W	Th	F	S
			1	2	3	4
5	6	7	8	9	10	11
12	13	14	15	16	17	18
19	20	21	22	23	24	25
26	27	28	29	30	31	

### June '24

Su	M	Tu	W	Th	F	S
						1
2	3	4	5	6	7	8
9	10	11	12	13	14	15
16	17	18	19	20	21	22
23	24	25	26	27	28	29
30						

### July '24

Su	M	Tu	W	Th	F	S
	1	2	3	4	5	6
7	8	9	10	11	12	13
14	15	16	17	18	19	20
21	22	23	24	25	26	27
28	29	30	31			

- School Closed/ Holidays/Breaks
- Back to School Open House
- First and Last Day of School
- Central Classroom (K-10th)
- Teacher in-Service Day (Satellite Classroom)
- Student/Parent/Teacher Conference
- Electives (6th-8th optional/ 9th-10th required)
- Satellite Classroom (K-10th)

# Start/End Times

***A drop-off and pick-up map will be provided to all families in the Welcome Back Newsletter***

***Drop-off: 8:15 AM - 8:30 AM***

***School begins at 8:30 AM***

***School Ends at 3:00 PM***

***Pick-up: 3:00 PM - 3:15 PM***



# Kindergarten Weekly **Sample** Schedule (AM/PM)

<i>Time</i>	<i>Kindergarten</i>
	(Satellite Classroom M/Th)
1 hour	Language (Parent Led) <ul style="list-style-type: none"> <li>• Personal list of sounds to review (10 min.)</li> <li>• Personal sight words to practice reading (10 min.)</li> <li>• Student reads a book (at their reading level) aloud (10 min.)</li> <li>• Parent reads to student (10 min.)</li> <li>• Phonics worksheets (10 min.)</li> <li>• Handwriting practice (10 min.)</li> </ul>
30 min.	Math (Parent Led) <ul style="list-style-type: none"> <li>• Practice math facts (10 min.)</li> <li>• Khan Academy practice (10 min.)</li> <li>• Practice time and money (10 min.)</li> </ul>

<i>Time</i>	<i>Kindergarten</i>
(Central Classroom T, W, Fr) <b>AM: 8:30 - 11:30</b> <b>PM: 12:00 - 3:00</b>	
20 min.	Morning meeting: Bible time, counting, weather, addition, subtraction, clock alphabet, letter sounds, calendar, pattern, share time
30 min.	Phonics/Reading lesson
25 min.	Direct instruction/Seatwork: handwriting, math, reading phonics
15 min.	Recess/snack
30 min.	Math lesson, Mad Minutes
1 hr.	Centers: handwriting, math, reading, phonics

# *Sample* Daily Schedule Elementary (1-5)

<i>Time</i>	<i>1st Grade</i>	<i>2nd Grade</i>	<i>3rd Grade</i>	<i>4th Grade</i>	<i>5th Grade</i>
	(Satellite Classroom-Mon/Th) (Onsite-T, W, Fr)	(Satellite Classroom-Mon/Th) (Onsite-T, W, Fr)	(Satellite Classroom-Mon/Th) (Onsite-T, W, Fr)	(Satellite Classroom-Mon/Th) (Onsite-T, W, Fr)	(Satellite Classroom-Mon/Th) (Onsite-T, W, Fr)
8:00-9:03	HR / Math	HR / Math	HR / Math	HR / Math	HR / Math
9:05-9:35	Chapel (Only on Tuesday)				
9:05-11:58	HR- Discipleship Time	HR- Discipleship Time	HR- Discipleship Time	HR- Discipleship Time	HR- Discipleship Time
	Writing workshop	Writing workshop	Reading, Language	Writing workshop	Writing workshop
	Reading, Language	Reading, Language	PE- (10:50-11:20)	Practice Time	Practice Time
	Practice Time	Practice Time	Practice Time	PE (11:25-11:58)	PE (11:25-11:58)
12:00-12:30	Lunch	Lunch	Lunch	Lunch	Lunch
12:32-1:58	Science, Social Studies	Science, Social Studies	Writing workshop	Reading, Language	Reading, Language
	Independent practice	Independent practice	Independent practice	Independent practice	Independent practice
2:00-2:15	Recess	Recess	Recess	Recess	Recess
2:15-3:00	PE (2:15-2:45)	PE (2:15-2:45)	Science, Social Studies	Science, Social Studies	Science, Social Studies
	<i>HR -Bible (Inductive study, characters)</i>	<i>HR -Bible (Inductive study, characters)</i>	<i>HR -Bible (Inductive study, characters)</i>	<i>HR -Bible (Inductive study, characters)</i>	<i>HR -Bible (Inductive study, characters)</i>
3:00	Dismissal	Dismissal	Dismissal	Dismissal	Dismissal



# *1st - 3rd Satellite Classroom Plans (M/Th) **Sample** (1-3 hours/day)*

## Monday

### **Language Arts:**

- Individualized Practice with Parent Interaction
  - Personal list of sounds to review
  - Personal sight words to practice reading
  - Read aloud to parent from book at student's independent reading level (hopefully provided by school)
- Parent Led
  - Read aloud to student (free choice/family read aloud)
- Student Independent
  - Phonics Worksheets and practice
  - Varies per level: Respond to prompt with a sentence or a drawing
    - 1st Grade Sample: Draw a map of your bedroom and label five items.
    - 2nd grade Sample: Draw a map of your bedroom and write a sentence that tells what you love most about your bedroom.
    - 3rd grade Sample: Write 3-5 sentences (based on student writing level) that describe your bedroom. Use a different adjective in each sentence. Use correct capitalization and punctuation, and make sure you write complete sentences.
  - New spelling words for the week
    - Students copy words
    - Read words aloud to parent
  - Printing/Cursive practice

### **Math:**

- Individualized Basic Facts Practice
- Word problem(s)
- Khan Academy for individualized practice (remediation or challenge)
- Narrative introduction to any new concepts. For example, a story book may be suggested that introduces time in a fun, engaging way. The teacher will be able to refer to that introduction and it will help students gain understanding more quickly.

## Thursday

- Practice and assignments from school days would be done
- Study/prepare for any assessments happening on Friday
- Finish projects that are due Friday

# 4th-6th Satellite Classroom Plans (M/Th) *Sample (3-6 hours/day)*

## Monday

### English:

- Read passages/chapters of the current literature book (**Answer questions, Annotate reading for specific elements, Design questions about the reading**)
- Grammar practice (**no new skills**)
- Write journal entries or respond to given writing prompt
- Practice unique writing genres: (**Write an email, Write a news brief about your family's weekend, Create a meme that illustrates what they learned at church the day before, Write a recipe or set of instructions**)
- Vocabulary assignment
- Comprehension test practice. Students read a passage and answer multiple choice questions. This is important practice for standardized tests.
- Work on any on-going projects

### Math

- Remedial practice for students that need it (ex: basic facts practice or review from last week)
- Word Problems that apply learning from previous week
- Kahn Academy for individualized practice
- Assignment that provides practice with ongoing concepts
- Narrative introduction to new concepts. The teacher may provide scenarios (reading or videos) that demonstrate the use of the new concept. For example, a carpenter needing to use fractions of measurement will introduce that concept. Or, a mom looking at the sale signs in the mall introduces the need for understanding percents.

## History/Social Studies

- Interview a parent about the upcoming content. For example, a student will ask a parent to share her memories of the first time she voted and explain her reasons for voting and why it's important.
- Current Events Monday: Each Monday, students look at the news and choose one article to read and summarize.

## Science

- Watch assigned videos that demonstrate new concepts. Students write a list of questions or summary of what they understood and what they did not understand.
- Students conduct at-home kitchen-type experiments to demonstrate learning from the previous week. Or, each Monday students build onto a science project that is personal to them that helps them walk through the Scientific Method. This could result in a Science Fair. This would be the "Monday" assignment each week. Teachers could provide check points and feedback along the way.

## Thursday

- For all subjects, students would be working on things from the previous two days and preparing for any assessments or deadlines on Friday

# Daily *Sample* Schedule Secondary (6th-10th)

<b>Time</b>	<b>6th Grade</b> (Self-contained)	<b>7th Grade</b>	<b>8th Grade</b>	<b>9th Grade</b>	<b>10th Grade</b>
	(Satellite Classroom- Mon/Th) (Onsite- T, W, Fr)	(Satellite Classroom- Mon/Th) (Onsite- T, W, Fr)	(Satellite Classroom - Mon/Th) (Onsite- T, W, Fr)	(Satellite Classroom - Mon/Th) (Onsite- T, W, Fr)	(Satellite Classroom-- Mon/Th) (Onsite- T, W, Fr)
<b>8:30-9:00</b>	<b>Chapel (Tues.)</b>				
<b>8:30-9:00</b>	HR -Discipleship (Wed./Fri.)	HR -Discipleship (Wed./Fri.)	HR -Discipleship (Wed./Fri.)	HR -Discipleship (Wed./Fri.)	HR -Discipleship (Wed./Fri.)
<b>9:02-9:52</b>	Math	Math	English	Global Perspectives/Bible	Environmental Science
<b>9:54-10:44</b>	English	Science	Math	PE/Health	American History
<b>10:45-11:00</b>	<b>Recess</b>				
<b>11:02-11:52</b>	History	PE		Integrated Math I	English
<b>11:54-12:29</b>	HR -Bible (Inductive study, characters)	HR -Bible (Inductive study, characters)	HR -Bible (Inductive study, characters)	HR -Bible (Inductive study, characters)	HR -Bible (Inductive study, characters)
<b>12:30-1:05</b>	<b>Lunch (35 min)</b>				
<b>1:07-1:57</b>	PE	English	History	Biology	Integrated Math II
<b>1:59-2:49</b>	Science	Social Studies	Science	English	Bible
<b>2:51-3:00</b>	HR -Wrap-Up	HR -Wrap-Up	HR -Wrap-Up	HR -Wrap-Up	HR -Wrap-Up

# *7th-10th Satellite Classroom Plans (M/Th) **Sample (3-7 hours/day)***

## English:

- Read chapters of the current literature book (**Annotate, Answer, questions, Create discussion questions, Respond to prompt, Come ready for socratic discussion**)
- Grammar practice (**no new skills**)
- Post on the discussion board about opinions or background knowledge about new reading that will be introduced on Tuesday.
- Write journal entries or respond to given writing prompt
- Vocabulary assignment
- Independent/choice reading: Older students would be expected to annotate and come ready to share, or complete assignment and submit.
- Practice multiple choice tests for standardized testing and AP.
- Scour news for rhetorical devices being used and post them or bring them to share/discuss.
- Write a devotional response to Sunday's message.

## Math

- Video introduction to new concepts. "Try It" problems. Come ready to share.
- Remedial practice for students that need it (ex: basic facts practice or review from last week)
- Kahn Academy for individualized practice

## History

- Google research on new concepts: Each student assigned one topic to come ready to share about it. For example, if the teacher will be introducing the 1920's, students would be assigned topics like Prohibition, jazz music, women's suffrage, the Spanish Flu, the 1919 World Series, inventions, Presidents Harding & Coolidge, etc.
- Discussion board prompts that engage students in discussion about upcoming week's learning
- Reading or video that introduces students to the topic.
  - Students write a journal entry or students write questions about the content for the class to answer/discuss in class Tuesday
- Every Monday could be a "current events" day where students look at the news and bring in an article to share that relates to what has been learned
- Ongoing research project

# *7th-10th Satellite Classroom Plans Continued (M/Th) **Sample***

## **Science**

- Google research on new events/concepts: Each student assigned one topic to come ready to share about
- Students conduct at-home kitchen-type experiment to demonstrate learning from previous week. Send in video of themselves conducting experiment.
- Extra practice for anyone struggling (ie. Chemistry). This could be problems to solve, videos to watch, or reading to do.
- All students find one real-world application of the science being learned. Write a paragraph explaining the relevance. Submit, bring on Tuesday, or post on discussion board.
- Complete practice problems (Chemistry)
- Reading assignment

## **Bible**

- Reading and assignments
- Devotional Journal
- Service
- Response to Sunday's message/Sermon notes

## **Thursday**

Elective choices on Campus

# 4<sup>th</sup> - 8<sup>th</sup> - Thursday Elective Options/Ideas

4 <sup>th</sup> - 8 <sup>th</sup>	
Time	Elective Rotation
9:00-10:00	Rotation 1
10:15-11:15	Rotation 2
11:30-12:30	Rotation 3

<b><u>Electives</u></b> (9:00-12:30) <b>Q1: Aug.24 - Oct. 12 *** Q2: Oct. 26 - Dec. 21 *** Q3: Jan. 11 – Mar. 7</b> <b>Q4: Mar. 14 – May 23</b>	
<i>These special are completely optional</i> <i>The duration of each session will be 8 weeks. At that time, the student may sign up for another 8 weeks with the same class or choose a different class. The sessions will stop at the end of the quarter.</i>	
<b><u>Specials</u></b> Art Cooking Drama Sport Choir Yearbook Crafty Crafts Dance Martial Arts	<b><u>Labs</u></b> Science (STEM) Math Homework Club

# High School - Thursday Elective Options/Ideas

High School		<b><i>Elective Options/Ideas</i></b> (9:00-2:00)					
<b><i>Time</i></b>	<b><i>Elective Rotation</i></b>						
<b><i>9:00-10:30</i></b>	<b>Rotation 1</b>	<u><b>Career/Vocational Labs</b></u> Law Enforcement Intro to Trades Basic Auto Repairs Criminal Justice Cooking Domestic Skills	<u><b>Arts &amp; Crafts</b></u> Art Paper Crafts Ceramics Painting Crocheting Woodworking	<u><b>Science Labs</b></u> Astronomy Physical Science Biology Environmental Chemistry STEM	<u><b>Technology Labs</b></u> Networking Computer Repair Robotics STEM	<u><b>*Christian Education</b></u> Counseling Evangelism Inductive Study Worship Worship Band	<u><b>Education</b></u> Creative Writing Yearbook NHS/Leadership
<b><i>10:45-12:15</i></b>	<b>Rotation 2</b>						
<b><i>12:30-2:00</i></b>	<b>Rotation 3</b>						
		<u><b>Outdoor Idaho</b></u> Hunter's Safety Archery Idaho living	<u><b>Fine Arts</b></u> Drama Poetry Theatre Debate Choir	<u><b>Athletics</b></u> Golf Basketball Boys Flag Football Girls Volleyball Martial Arts	<u><b>Media Tech</b></u> Web Design Video Broadcasting Graphic Design Robotics E-Sports STEM	<u><b>Math Labs</b></u> Algebra Tutoring Geometry Tutoring Accounting *Econ (10th) Personal Finance	<u><b>Medical</b></u> Medical Terms CPR Emergency Medical Care First Aid *Health (9th)

# PE/Athletics

## PE Classes

### K-5th Grade

Kindergarten & 1st grade

2nd & 3rd grade

4th & 5th grade

### 6th-8th Grade

6th grade

7th grade

8th grade

### High School

9th grade (or this can  
be replaced with a  
sport)

## Athletics (After School)

### Elementary

(Community Clubs)

Flag football

Soccer

Basketball

Golf

Archery

### Middle School

(Club Ball/Christian League)

Boys Flag football

Girls Volleyball

Basketball

Golf

### High School

(Christian League)

7v7 Flag

Football

Girls Volleyball

Boys Basketball

Girls Basketball

Golf

Tennis



# Keeping the End in Mind (3 Graduation Tracks)

Calvary Preparatory Academy Graduation Tracks			
	Career/Vocational	College	Ministry
Math	6	8	6
English	8	8	8
Social Sciences	6	8	6
Humanities	2	2	2
Science	6	6	6
Bible	6	6	8
Elective	4	4	4
Speech/Comm.	1	1	1
Health	1	1	1
P.E.	1	1	1
Foreign Lang.		4	
Ministry	4	4	8
Senior Project	1	1	1
<b>Total Required Credits</b>	<b>46</b>	<b>54</b>	<b>52</b>

## Kindergarten Curriculum

Reading	<ul style="list-style-type: none"><li>• Zoo Phonics</li><li>• Journeys Reading</li><li>• Purposeful Design (ACSI) Language Arts</li></ul>
Math	<ul style="list-style-type: none"><li>• Ready Math</li></ul>
Handwriting	<ul style="list-style-type: none"><li>• Handwriting Without Tears</li></ul>
Science / Social Studies	<ul style="list-style-type: none"><li>• Hands on Materials (Science Centers)</li><li>• Evan Moor Resources</li></ul>
Bible	<ul style="list-style-type: none"><li>• Storybook Bible and Daily Devotions</li></ul>

## 1<sup>st</sup> Grade Curriculum

Reading	<ul style="list-style-type: none"><li>● Purposeful Design (ACSI) Language Arts</li><li>● Journeys Reading</li><li>● Words Their Way (Phonics and Spelling)</li></ul>
Math	<ul style="list-style-type: none"><li>● Ready Math</li></ul>
Handwriting	<ul style="list-style-type: none"><li>● Handwriting Without Tears</li></ul>
Science / Social Studies	<ul style="list-style-type: none"><li>● Purposeful Design Science</li><li>● Evan Moor Resources</li></ul>
Bible	<ul style="list-style-type: none"><li>● The Young Reader's Bible and Daily Devotions</li></ul>

## 2<sup>nd</sup> Grade Curriculum

Reading	<ul style="list-style-type: none"><li>● Purposeful Design (ACSI) Language Arts</li><li>● Journeys Reading</li><li>● Words Their Way (Phonics and Spelling)</li></ul>
Math	<ul style="list-style-type: none"><li>● Ready Math</li></ul>
Handwriting	<ul style="list-style-type: none"><li>● Handwriting Without Tears</li></ul>

Science / Social Studies	<ul style="list-style-type: none"><li>● Purposeful Design Science</li><li>● Evan Moor Resources</li></ul>
Bible	<ul style="list-style-type: none"><li>● The Young Reader's Bible &amp; Daily Devotions</li></ul>

### 3<sup>rd</sup> Grade Curriculum

Reading	<ul style="list-style-type: none"><li>● Purposeful Design (ACSI) Language Arts</li><li>● Words Their Way (Phonics and Spelling)</li><li>● Journeys Reading + Chapter Book Sets</li></ul>
Math	<ul style="list-style-type: none"><li>● Ready Math</li></ul>
Handwriting	<ul style="list-style-type: none"><li>● Handwriting Without Tears</li></ul>
Science / Social Studies	<ul style="list-style-type: none"><li>● Purposeful Design Science</li><li>● Evan Moor Resources</li></ul>
Bible	<ul style="list-style-type: none"><li>● Hands on Bible and Daily Devotions</li></ul>

## 4<sup>th</sup> Grade Curriculum

Reading	<ul style="list-style-type: none"><li>● Shurley English</li><li>● Words Their Way (Spelling)</li><li>● Journeys Reading + Chapter Book Sets</li></ul>
Math	<ul style="list-style-type: none"><li>● Ready Math</li></ul>
Handwriting	<ul style="list-style-type: none"><li>● Handwriting Without Tears</li></ul>
Science / Social Studies	<ul style="list-style-type: none"><li>● Purposeful Design Science</li><li>● Idaho State History</li></ul>
Bible	<ul style="list-style-type: none"><li>● Hands on Bible and Daily Devotions</li></ul>

## 5<sup>th</sup> Grade Curriculum

Reading	<ul style="list-style-type: none"><li>● Shurley English</li><li>● Words Their Way (Spelling)</li><li>● Journeys Reading + Chapter Book Sets</li></ul>
Math	<ul style="list-style-type: none"><li>● Ready Math</li></ul>

Handwriting	<ul style="list-style-type: none"><li>● A Reason for Handwriting</li></ul>
Science / Social Studies	<ul style="list-style-type: none"><li>● Purposeful Design Science</li><li>● Evan Moor Resources</li></ul>
Bible	<ul style="list-style-type: none"><li>● Hands on Bible and Daily Devotions</li></ul>

## Middle School Curriculum

Language Arts	<ul style="list-style-type: none"><li>● Shirley English (might change next year)</li><li>● Journeys</li><li>● Literature: Novels</li></ul>
Math	<ul style="list-style-type: none"><li>● Ready Math (might change next year)</li></ul>
Social Studies	<ul style="list-style-type: none"><li>● World Studies; BJU Press</li></ul>
Science	<ul style="list-style-type: none"><li>● Physical Science; CSI</li></ul>
Bible	<ul style="list-style-type: none"><li>● Hands on Bible and Daily Devotions</li></ul>



# Keeping Your Kids Safe



## Security Cameras

We will have 30 cameras throughout our facility both inside and out. One in each classroom, at the entrance and exits, and high traffic areas.

## Locked Doors

All but one exterior door will be locked with a magnetic strip key access. Front interior doors will be always locked. All guests will need to be buzzed in and must check in with the front desk prior to accessing the building.

## Security Team Onsite

We have a team of prior Military/Law Enforcement that will monitor cameras, check the perimeter and assist where needed.

## Teacher Training

We will partner with our local law enforcement to assist with training and drills.

## Door Jammers

Each Teacher will have a reliable quick and easy to deploy door jammer for their classroom.

# Registration and Tuition

Student Fees	
Registration Fee* <ul style="list-style-type: none"><li>• Re-enrollment</li><li>• Technology</li><li>• Curriculum</li></ul>	\$450.00
Family Annual Fees	
Facility Fee	\$300.00

**\*New Students will pay a non-refundable \$50 application fee prior to acceptance, which will go towards their Registration Fee.**

Monthly Payment	
Kindergarten	\$360.00
1st- 5th Grade	\$450.00
6th-8th Grade	\$500.00
9th-10th Grade	\$600.00
Electives (Thurs.)	TBD

Tuition	
Kindergarten	\$3,600.00
1st- 5th Grade	\$4,500.00
6th-8th Grade	\$5,000.00
9th-10th Grade	\$6,000.00
Electives (Thurs.)	TBD

# Registration

---

# Accepting Applications

*Classes are filling fast!*

- Applications will be available on the school website (**the link will be provided soon**)
  - Secure your student's seat (*due to our small class size, seats are limited*)
  - Half of the student fee (**\$225 per student**) will be due at the time of enrollment.
-

# Family Volunteer Expectations

---

**All Calvary Prep Academy families are expected to volunteer 4 hours per month. Some volunteer areas include but not limited to,**

**Assisting in...**

- **the classroom (K-5)**
- **the school office**
- **on the school grounds**
- **during school events**
- **lunch room**
- **recess**
- **other areas**
- **Summer Help**

**\*\*If a family is not able to fulfill the monthly volunteer expectation, they may choose to opt into a monetary option.**

---

# Tech Trep and Overture Learning Update

**Update:** Families will be managing the enrollment for these programs independent of the school.

**Context:**

- Both programs are state funded and require curriculum to be “non-religious.” This has impacted funds available to families year after year and can provide unnecessary curriculum direction that steers us away from biblical based perspectives; something we will not compromise on.
- Additionally, the funds have been a lump sum wired to the school and they are very difficult to track and manage. Some families stop participating in the program and because of the lump sum payouts, the school receives from the programs (2x per year), the school is then refunding back to the programs and having to track down tuition deficits and credits.

*NOTE: We plan on having a representative come and talk to families sometime before next school year begins, to guide them through the process to enroll and upload receipts independently. Tuition cannot be uploaded as a receipt because we are a Christian school, but everything from internet costs to extracurricular costs such as club sports/programs, can be used.*

*For more info please visit:*

*<https://id.techtrepacademy.com/how-it-works-2/> or <https://www.overturelearning.com/reimbursements>*

# Calvary Prep Academy Discounts

## Sibling

2nd child 10%

3rd child 15%

4th + 20%

## Referrals

We will offer families **\$150** off of their facility fees if they refer a friend that is accepted and is fully enrolled into Calvary Prep Academy.

# Enrollment Capacity Ratio

## Elementary (K-5th)

<i>Kindergarten</i>	<i>1st Grade</i>	<i>2nd Grade</i>	<i>3rd Grade</i>	<i>4th Grade</i>	<i>5th Grade</i>
<b>2:16</b>	<b>1.5:18</b>	<b>1.5:18</b>	<b>1.5:18</b>	<b>1.5:18</b>	<b>1:18</b>

## Secondary (6th-10th)

<i>6th Grade</i>	<i>7th Grade</i>	<i>8th Grade</i>	<i>9th Grade</i>	<i>10th Grade</i>
<b>1:20</b>	<b>1:20</b>	<b>1:20</b>	<b>1:24</b>	<b>1:24</b>

# Additional Resources

- <https://naumsinc.org/>
- <https://www.cognia.org/services/accreditation-certification/>
- [calvarymeridianprep.org](http://calvarymeridianprep.org)



What questions do you have for us?

For additional information, feel free to contact our school office at  
[Office@calvarymeridianprep.org](mailto:Office@calvarymeridianprep.org)

---